

**EPSON<sup>®</sup>**



VT6L

# All-in-One 6-Axis Robot





## The All-in-One solution that's compact and easy to use

**With next-level technology at an incredible price,** the VT6L All-in-One 6-Axis robot is ideal for a wide variety of simple applications. Delivering many of the features found in Epson's high-end robots—including powerful Epson RC+® and Epson RC+ Express development software—and fully integrated options such as vision guidance, the VT6L offers a reach of 900 mm and a payload of 6 kg. A feature-packed performer, it includes a built-in controller and simplified cabling with a hollow end-of-arm design in a compact SlimLine structure—all at a remarkably low cost. The VT6L installs in minutes and is available with 110 V and 220 V power, or as a 48 V DC-powered version for mobile applications. Plus, there's no battery required for the encoder, reducing the overall cost of ownership.



## Feature-packed at an amazing price

**All-in-One solution** — space-saving design with built-in controller

**Two powerful development environments** — Epson RC+ for full-featured, easy-to-learn programming and Epson RC+ Express for no-code, visual-based programming

**Full featured; value without compromise** — the same powerful features found in Epson’s high-end robots at an incredibly affordable price; with a reach of 900 mm and a payload of 6 kg

**SlimLine design** — compact wrist pitch enables access to hard-to-reach areas in confined spaces

**Power options for stationary or mobile applications** — available with 110 V and 220 V power, or as a 48 V DC-powered mobile version

**Fast, easy integration** — installs in minutes, requiring less time and labor expense for system integration

**Integrated vision guidance option** — designed specifically for robot guidance; makes it easy to automate simple applications when vision is required

**Simplified cabling** — hollow end-of-arm design makes end-of-arm tooling easier than ever

**No battery required for encoder** — minimizes downtime and reduces overall cost of ownership

**Application versatility** — ideal for machine-tool and injection-molding load/unload, pick-and-place, dispensing and mobile applications

# Compact All-in-One solution

With a built-in controller, this space-saving All-in-One has everything you need—and installs in minutes. Emergency Stop, I/O, USB, Ethernet and Teach Pendant (TP) are all available from the easy-access back panel.

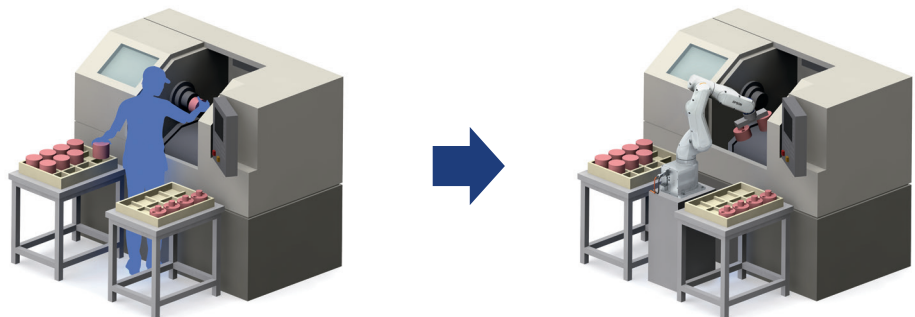


# All you need for your next automation application

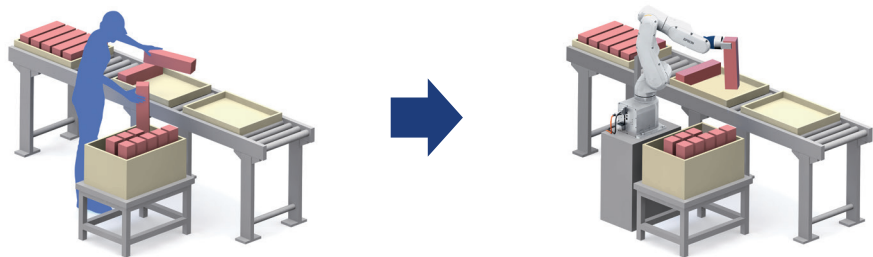
With a 900 mm reach and a 6 kg payload, the VT6L is built to handle a wide variety of applications.

**Whether it's loading and unloading, packaging or a mobile application,** this full-featured performer offers the perfect solution for most simple automation and handling tasks. Its SlimLine design provides the ideal fit for factories with limited floor space, while its compact wrist pitch enables easy access to hard-to-reach areas. In addition, its powerful tools and software allow you to create a customized system to meet the requirements for your next application.

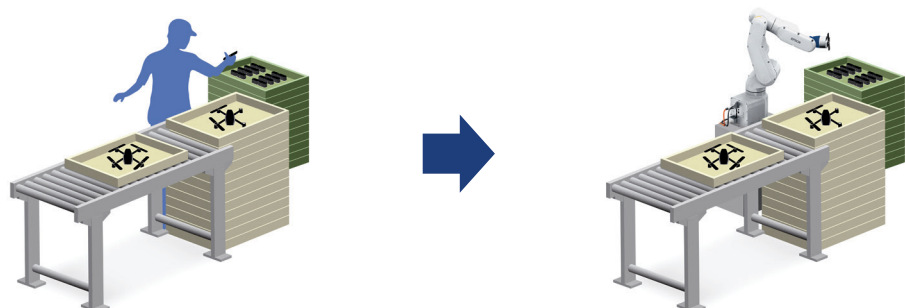
**Machine  
Load/Unload**



**Packaging**



**Assembly**





## Automation applications

The VT6L All-in-One 6-Axis robot is extremely versatile, providing a wide range of automation possibilities:

- Assembly
- Pick and place
- Material handling
- Packaging
- Kitting / Tray loading
- Machine tending
- Screwdriving
- Dispensing
- Palletizing
- Lab analysis and testing
- Inspection and testing
- Finishing
- Grinding/Polishing
- Mobile applications

# Epson RC+ and Epson RC+ Express

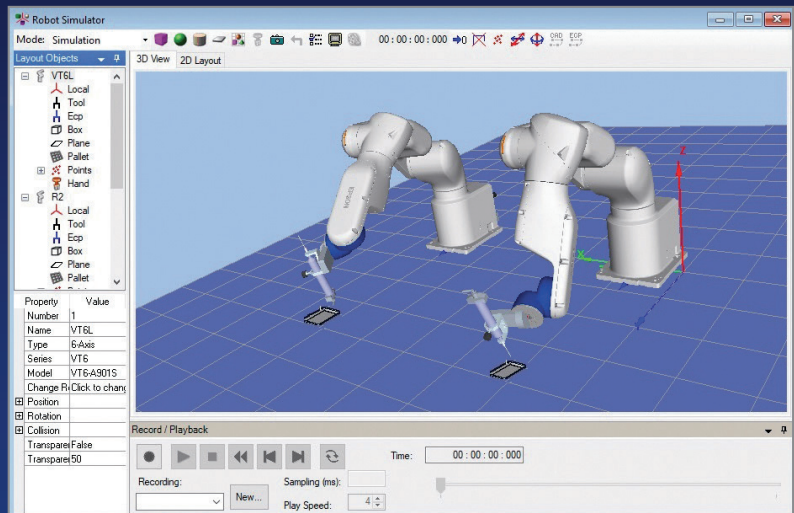
## Smart, intuitive software for Epson robots

Epson RC+ and Epson RC+ Express offer the ultimate selection of powerful, easy-to-use features, reducing the time needed to develop automated robot solutions. Epson RC+ advanced software includes fully integrated options such as vision guidance, force guidance, conveyor tracking, part feeding and more. Epson RC+ Express features an easy-to-learn, block-style robot teaching environment, ideal for new users with little or no coding experience.

- Software options for simple or complex applications
- Easy-to-learn programming (Epson RC+) or no-code programming environment (Epson RC+ Express)
- 3D simulator
- Quick deployment of your robotic system

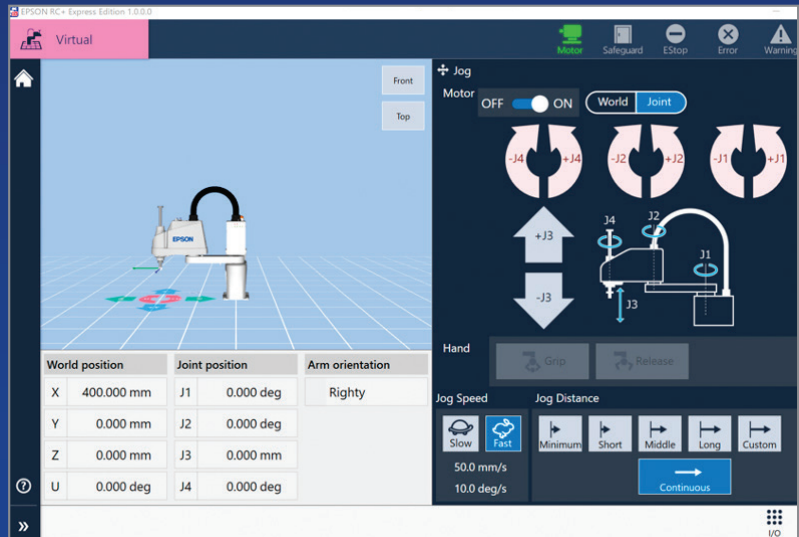
## Epson RC+

Comprehensive suite of advanced tools and features in one convenient, integrated environment.



## Epson RC+ Express

Intuitive no-code, visual-based robot teaching environment.

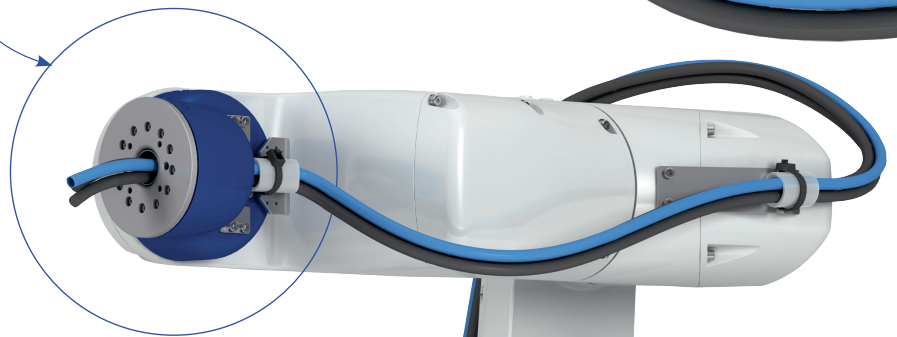
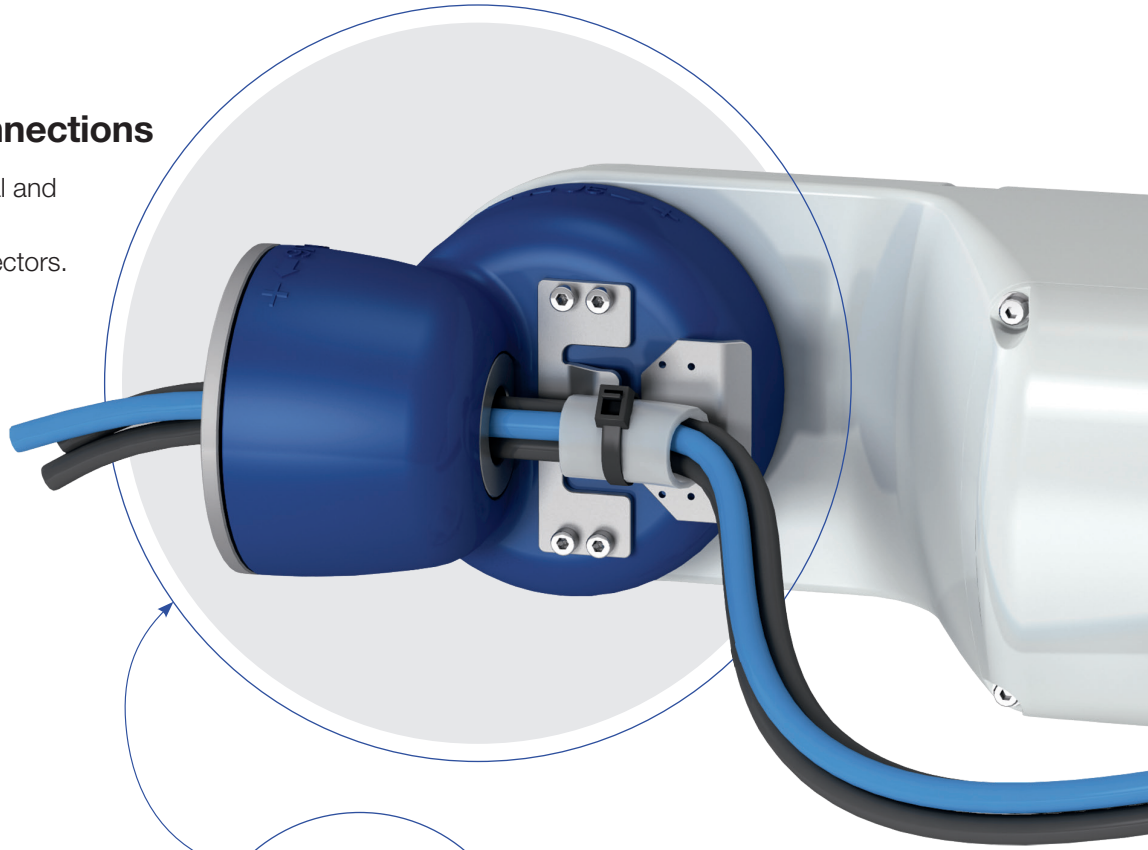


# Efficient hardware design

As with all Epson 6-Axis robots, the VT6L features a SlimLine design, compact wrist pitch and large working range. Motors, amplifiers and other internal components were made by Epson to maximize performance.

## Easy end-of-arm connections

Convenient end of arm electrical and pneumatic lines makes it easy to integrate and control end effectors.



## Simplified end-of-arm cabling

A hollow end-of-arm design makes attaching end-of-arm tooling easier than ever. This unique structure reduces the typically long end-of-arm cable loop required to eliminate pinching and pulling on the tooling.

# Options and accessories

## Integrated vision guidance

**Highly regarded in the industry** as simple to use with a wide variety of powerful tools, Epson vision systems have provided integrated robot guidance for over 25 years. Our Epson Vision Guide software features high-performance tools in an intuitive point-and-click environment.

## Fieldbus interface options

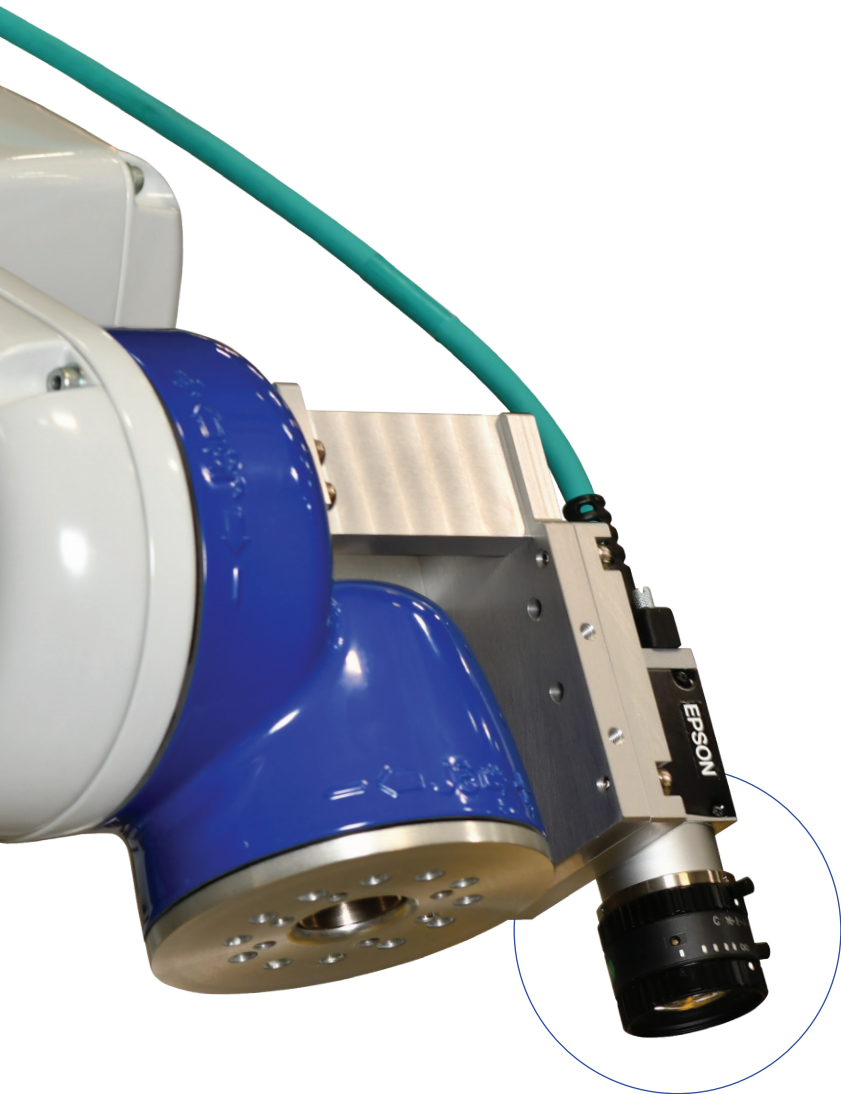
**Fieldbus I/O interfaces** are used in factories worldwide to reduce cabling costs and setup time, and promote standard device usage. However, there is not one accepted Fieldbus I/O standard. That's why we offer a wide variety of options including:

- EtherNet/IP®
- DeviceNet®
- EtherCAT®
- PROFINET
- PROFIBUS
- CC-Link®

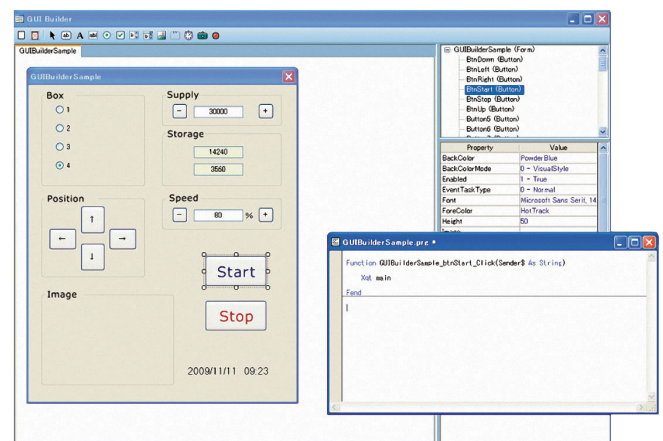
## GUI Builder

**Epson's GUI Builder provides** the tools necessary to create graphical user interfaces from within the Epson RC+ development environment. With the built-in GUI Builder toolset, users can work from one development environment, which helps reduce overall development time.

- Create GUIs without Visual Studio® or other third-party software tools
- Create and debug GUI forms from your Epson RC+ project
- Form and control events are executed as SPEL™+ tasks



VT6L shown with mobile mounted camera for use with Epson Vision Guide.



## Specifications

**Mounting Type<sup>1</sup>** Tabletop (AC or DC), ceiling (AC) or wall (AC)

**Arm Length** 920 mm

### Payload

Rated: 3 kg

Maximum: 6 kg

### Repeatability

Joints #1 – #6: ±0.1 mm

### Standard Cycle Time<sup>2</sup>

0.60 sec

### Maximum Reach

P Point, Joints #1 – #5, Center: 920 mm

P Point, Joints #1 – #6, Flange Surface: 1,000 mm

### Maximum Motion Range

Joint #1: ±170 deg

Joint #2: -160 deg ~ +65 deg (225 deg)

Joint #3: -51 deg ~ +190 deg (241 deg)

Joint #4: ±200 deg

Joint #5: ±125 deg

Joint #6: ±360 deg

### Allowable Moment of Inertia

Joint #4: 0.3 kg · m<sup>2</sup>

Joint #5: 0.3 kg · m<sup>2</sup>

Joint #6: 0.1 kg · m<sup>2</sup>

### Brakes

All axes

**Standard I/O** In: 24 / Out: 16

**Remote I/O** In: 8 / Out: 8

(Remote function assigned to standard I/O)

## Other

**Power** AC: 100 V – 240 V Single Phase, DC: 48 V

**Power Cable Length** AC: 5 m, DC: 2 m

**Weight (Cables Not Included)** 40 kg (88 lb);

IP rated: 42 kg (92 lb)

**Controller** Built-in

**Installation Environment** Standard (AC or DC), Cleanroom

ISO Class 4<sup>3</sup> (AC), Protected IP67 (AC)

### Safety Standard

CE Mark, EMC Directive, Machinery Directive,

ANSI/RIA R15.06-2012, NFPA 79 (2007 Edition)

## What's Included

VT6L All-in-One 6-Axis robot

Robot power cable

Epson RC+ and Epson RC+ Express development software

USB cable

E-Stop unit with cable

VT6L Robot System Safety and Installation Manual

Connector set (I/O, hand I/O and safety circuit connectors)

## Support

**Customer Service** (562) 290-5920,  
service@robots.epson.com

**Applications Support** (562) 290-5930,  
applications@robots.epson.com

**Sales Inquiries** (562) 290-5997,  
info@robots.epson.com

## Limited Warranty

Standard 15-month limited warranty, with optional extended service plans available<sup>4</sup>

## Epson Preferred Plus™ Extended Service Plans<sup>4</sup>

Plans below are available only at the time of hardware purchase.

1-Year Return for Repair

EPPRBPVTR1

2-Year Return for Repair

EPPRBPVTR2

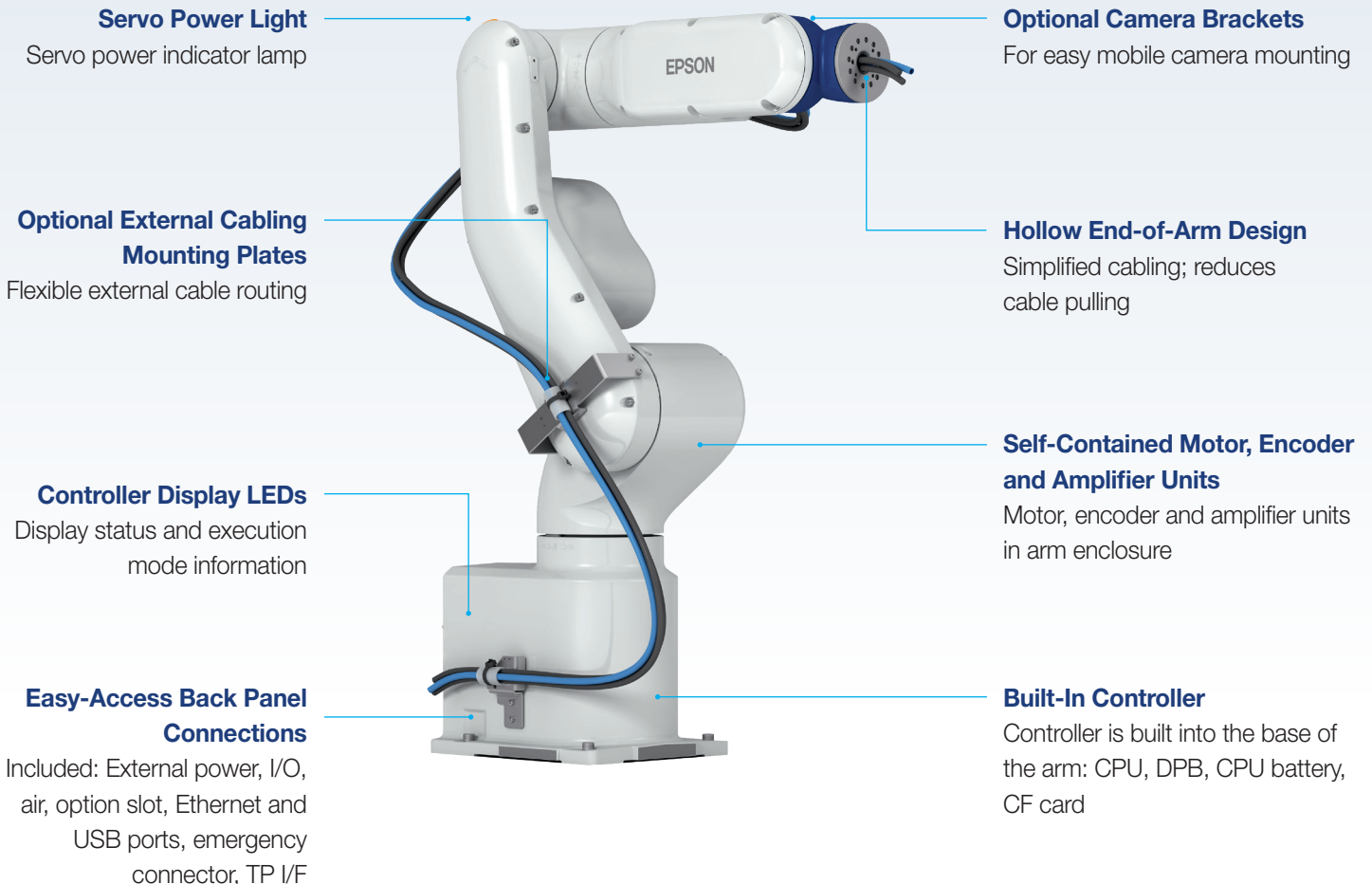
Plans below are available for purchase anytime before limited warranty expires.

1-Year Return for Repair

EPPRBVTR1

2-Year Return for Repair

EPPRBVTR2



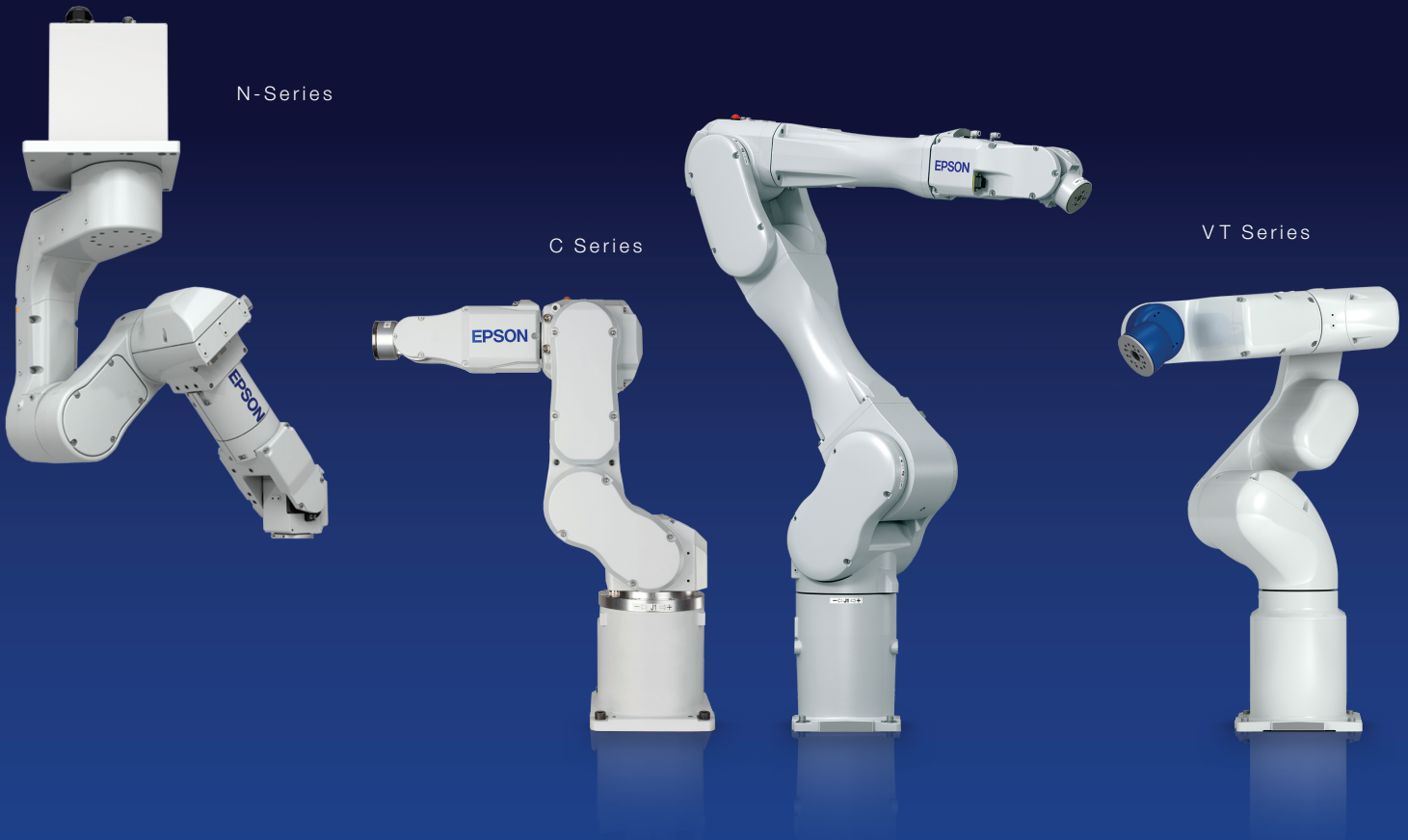


# The Epson Advantage

**Why choose Epson robots?** As precision automation specialists, the Epson Robots team has been building automation products for over 40 years. As a leader in small-parts-assembly applications, we've introduced many firsts. As a result, our innovative products are hard at work in thousands of manufacturing facilities throughout the world.

## Leading Epson technology

- Epson is the #1 SCARA robot manufacturer in the world, with more than 300 models to choose from and over 150,000 robots sold worldwide
- We introduced the world's first folding-arm 6-Axis robot
- Epson's patented GYROPLUS™ technology significantly reduces residual vibration, resulting in fast cycle times and high precision



## What you need, when you need it

- The Epson lineup features 6-Axis and SCARA robots with payloads up to 50 kg and reaches ranging from 175 mm to 1,400 mm
- We offer a wide range of fully integrated options such as vision guidance, force guidance, IntelliFlex™ part feeding and more

## Intuitive programming software

- Epson RC+ offers a comprehensive suite of advanced tools and features in one convenient, integrated environment
- Epson RC+ Express provides an intuitive no-code robot teaching environment for users who have little or no programming experience

## Reliability you can count on

- Our team is dedicated to helping you find the best solution for your automation needs
- Epson robots are long-lasting and require little maintenance



---

## Epson Business Solutions

Driven by a relentless pursuit of innovation and market leadership, Epson empowers organizations to achieve their unique goals through a wide breadth of precision-engineered solutions. With a full suite of efficient and compact products ranging from printers to projectors and robots to microdevices, Epson is uniquely positioned to provide enduring partnerships and world-class expertise to those we serve every step of the way.

Discover how Epson can help you work toward the future. [epson.com/forbusiness](https://epson.com/forbusiness)



Scan to learn more.

---

**1** Default software setting is “tabletop.” To use the VT6L in a wall- or ceiling-mount configuration requires changing the model setting in Epson RC+. | **2** Cycle time based on round-trip arch motion (300 mm horizontal, 25 mm vertical) with 1 kg payload (path coordinates optimized for maximum speed). | **3** Complies with ISO Class 4 (ISO 14644-1) cleanroom standards. | **4** See individual service plan for details.

**Epson America, Inc.**  
3131 Katella Ave., Los Alamitos, CA 90720

**Epson Canada Limited**  
185 Renfrew Drive, Markham, Ontario L3R 6G3

[epson.com](https://epson.com)  
[epson.ca](https://epson.ca)  
[epsonrobots.com](https://epsonrobots.com)

Specifications and terms are subject to change without notice. EPSON and Epson RC+ are registered trademarks and GYROPLUS and SPEL are trademarks of Seiko Epson Corporation. Epson Preferred Plus and IntelliFlex are trademarks of Epson America, Inc. Visual Studio is a trademark of the Microsoft group of companies. All other product and brand names are trademarks and/or registered trademarks of their respective companies. Epson disclaims any and all rights in these marks. Copyright 2025 Epson America, Inc. CPD-71473 11/25